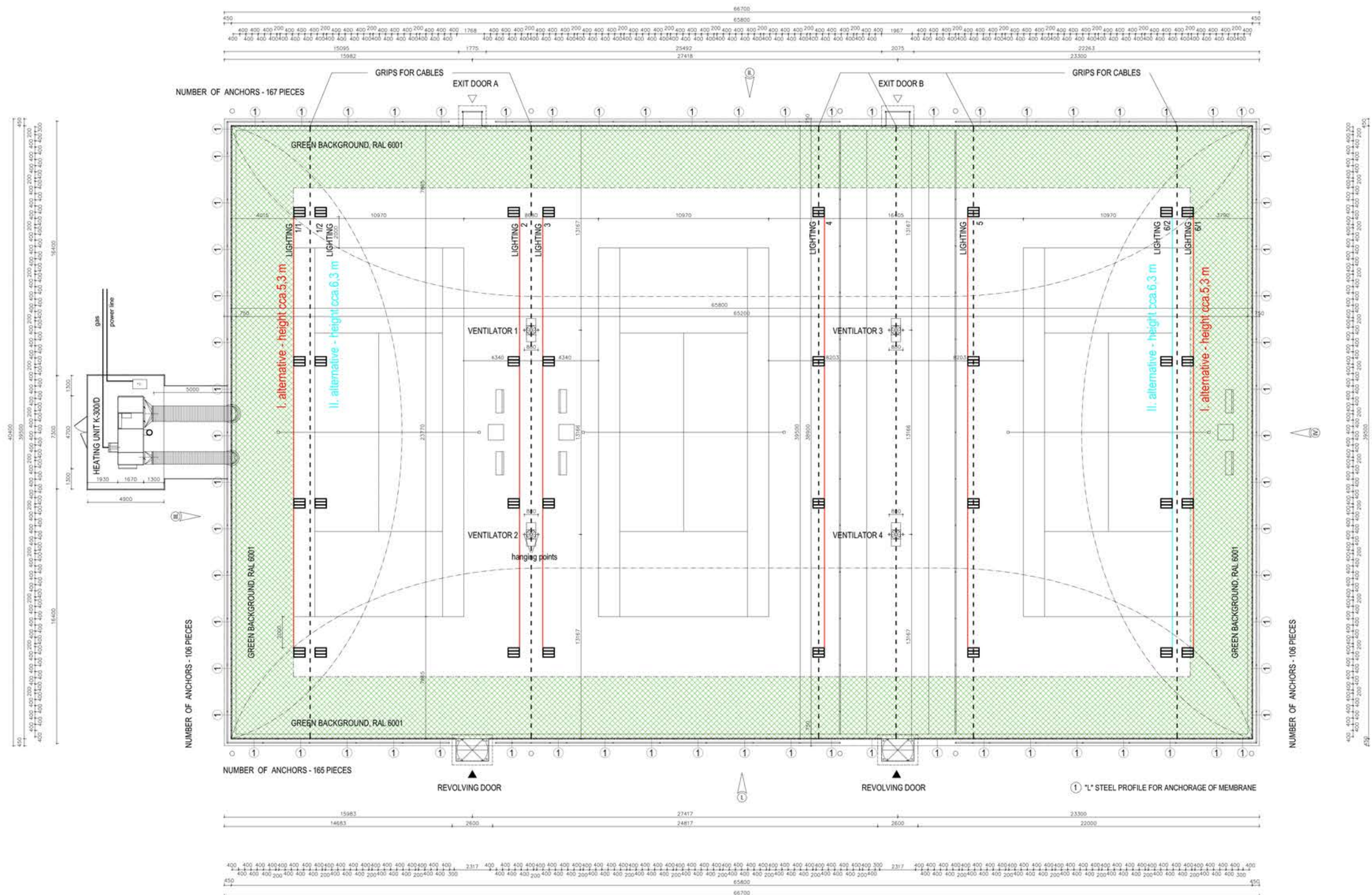


# AIR DOME 65,80 x 39,50 x 11,00

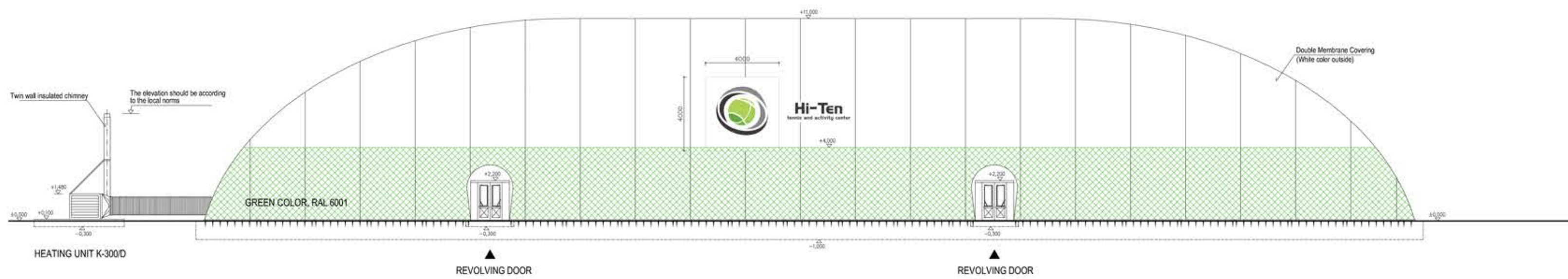
- double membrane



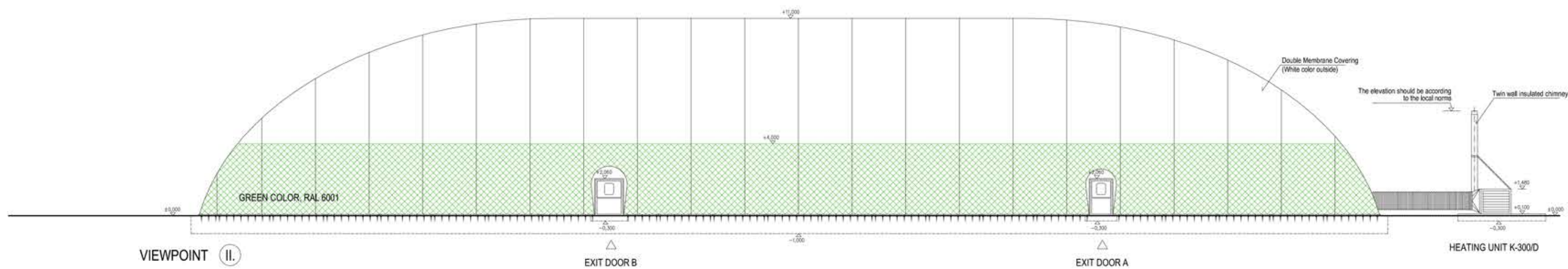
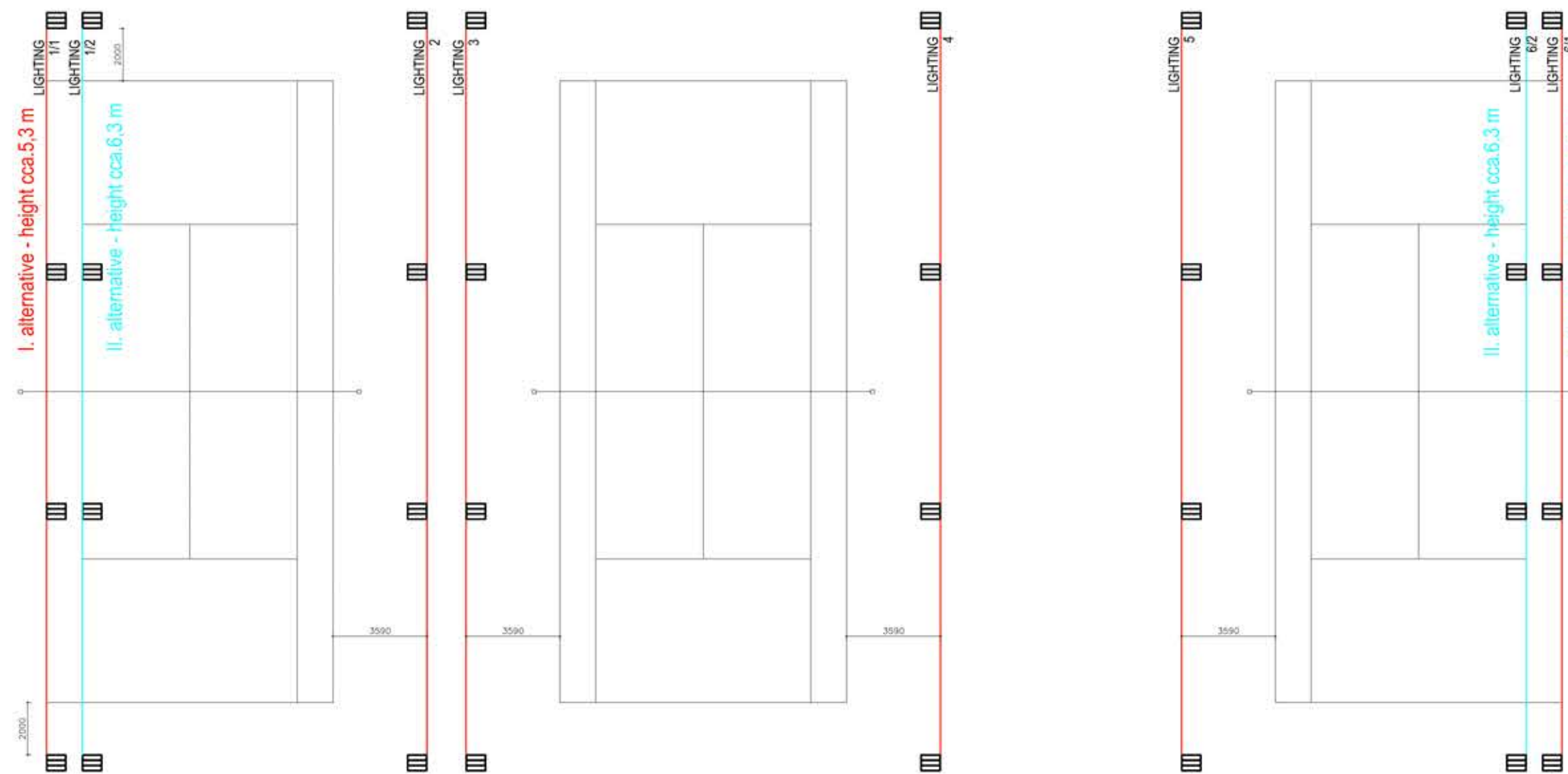


# AIR DOME 65,80 x 39,50 x 11,00

- double membrane



VIEWPOINT I.

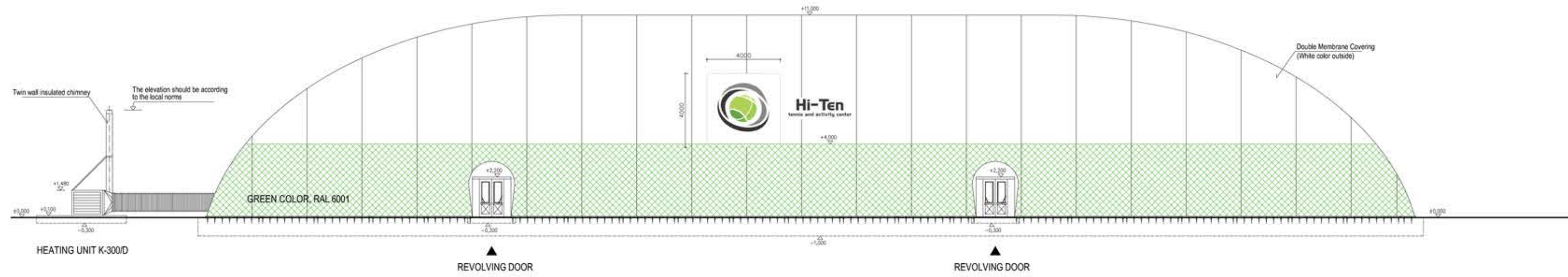


VIEWPOINT II.

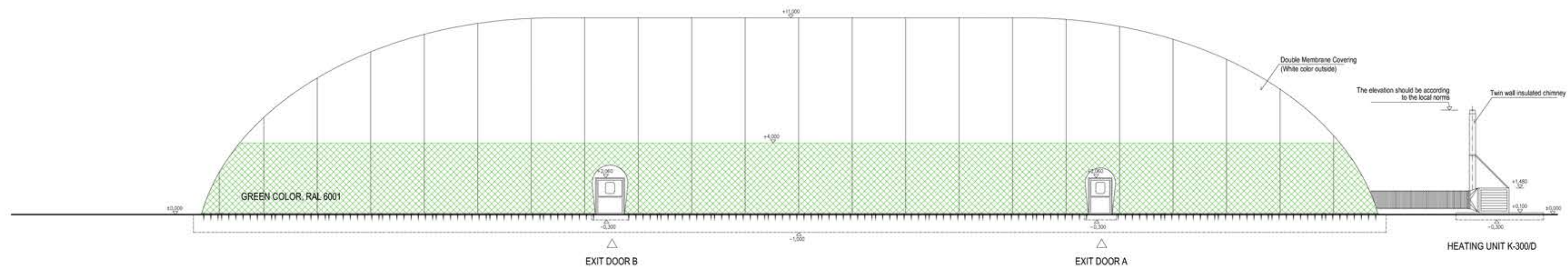


# AIR DOME 65,80 x 39,50 x 11,00

- double membrane



VIEWPOINT I.

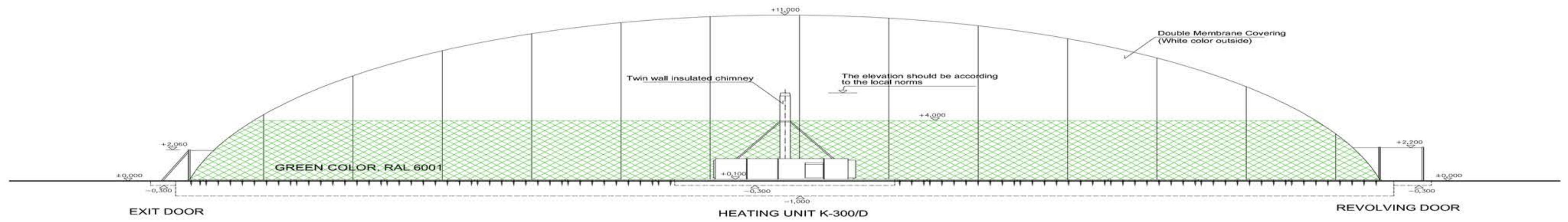


VIEWPOINT II.

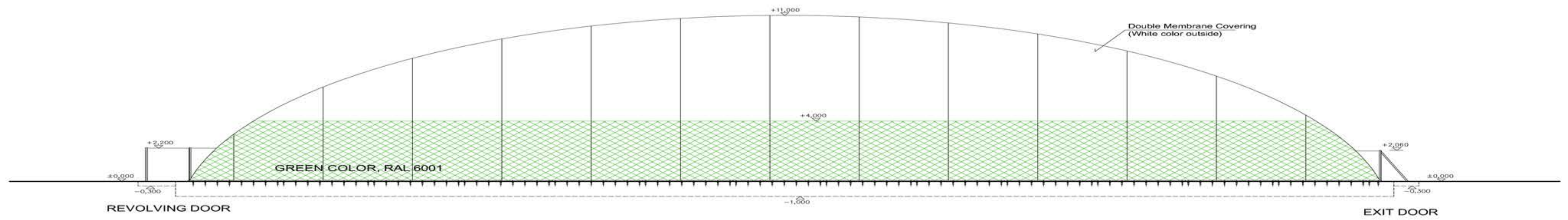


# AIR DOME 65,80 x 39,50 x 11,00

## - double membrane



VIEWPOINT III.

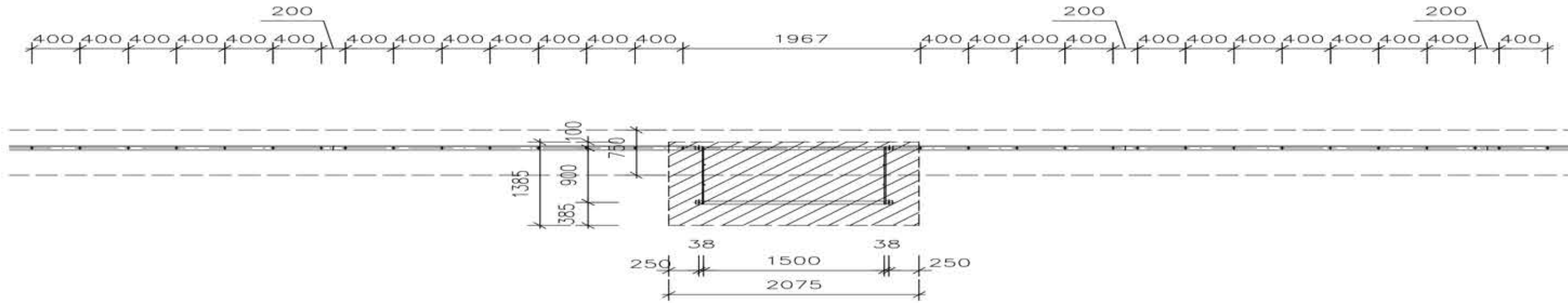


VIEWPOINT IV.

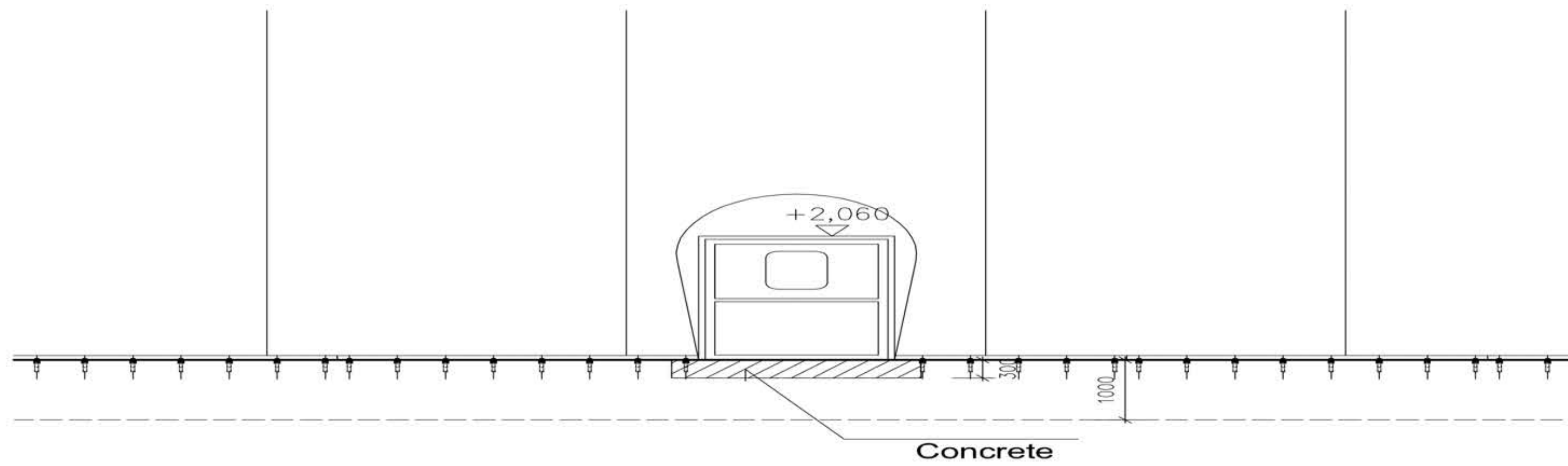




# AIR DOME 65,80 x 39,50 x 11,00 - double membrane



PLAN VIEW



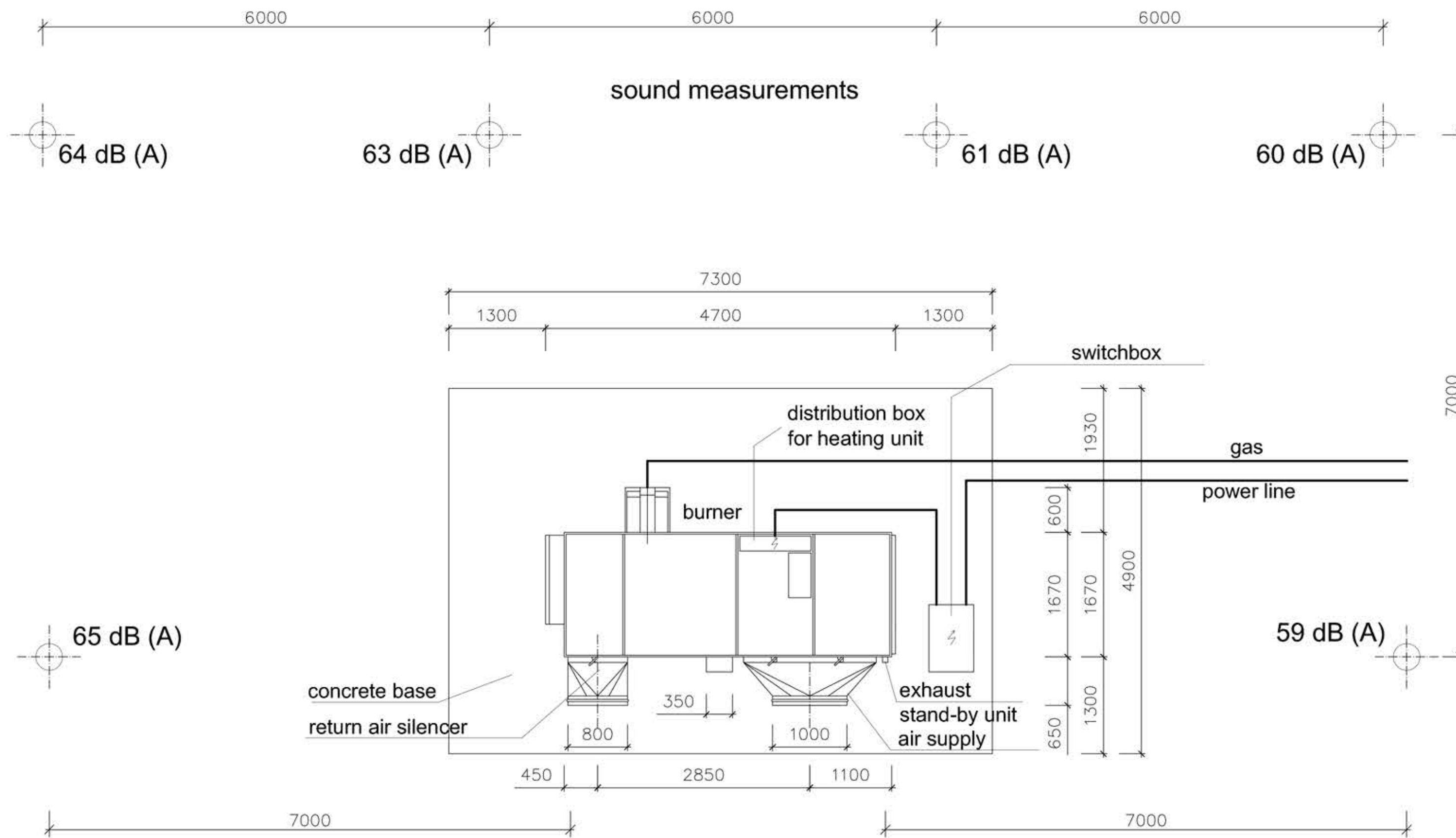
LATERAL VIEW

EXIT DOOR B



# AIR DOME 65,80 x 39,50 x 11,00

## - double membrane

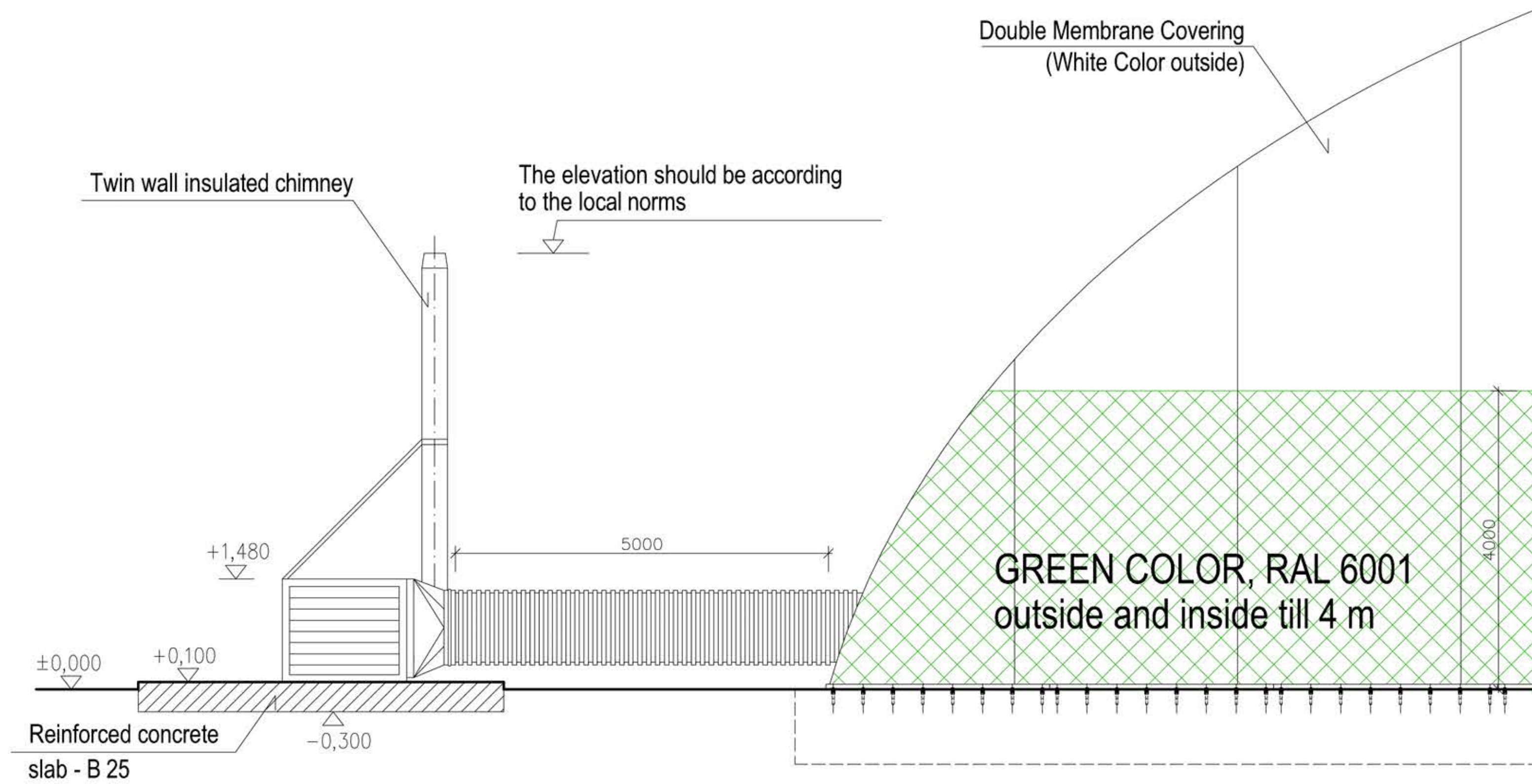


### HEATING UNIT K-300/D



# AIR DOME 65,80 x 39,50 x 11,00

## - double membrane

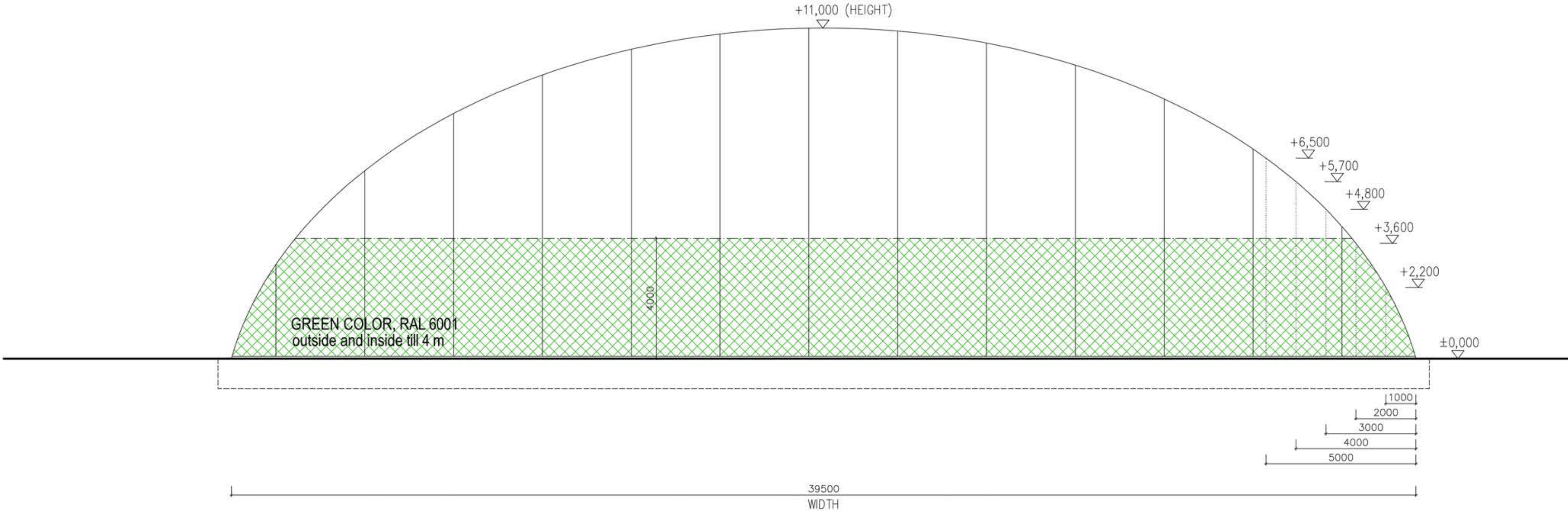


HEATING UNIT K-300/D



# AIR DOME 65,80 x 39,50 x 11,00

- double membrane

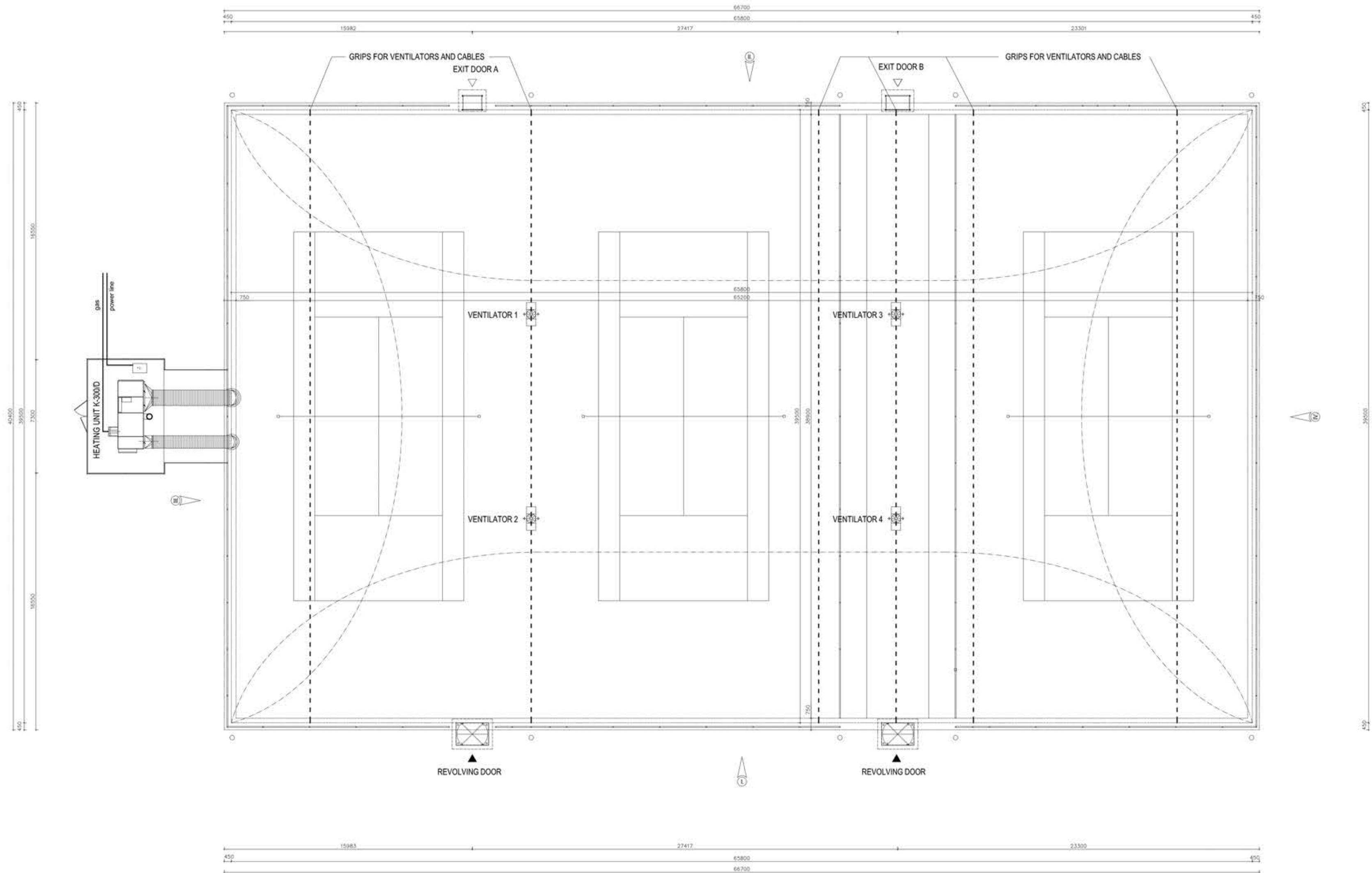


RADIUS OF AIR DOME



# AIR DOME 65,80 x 39,50 x 11,00

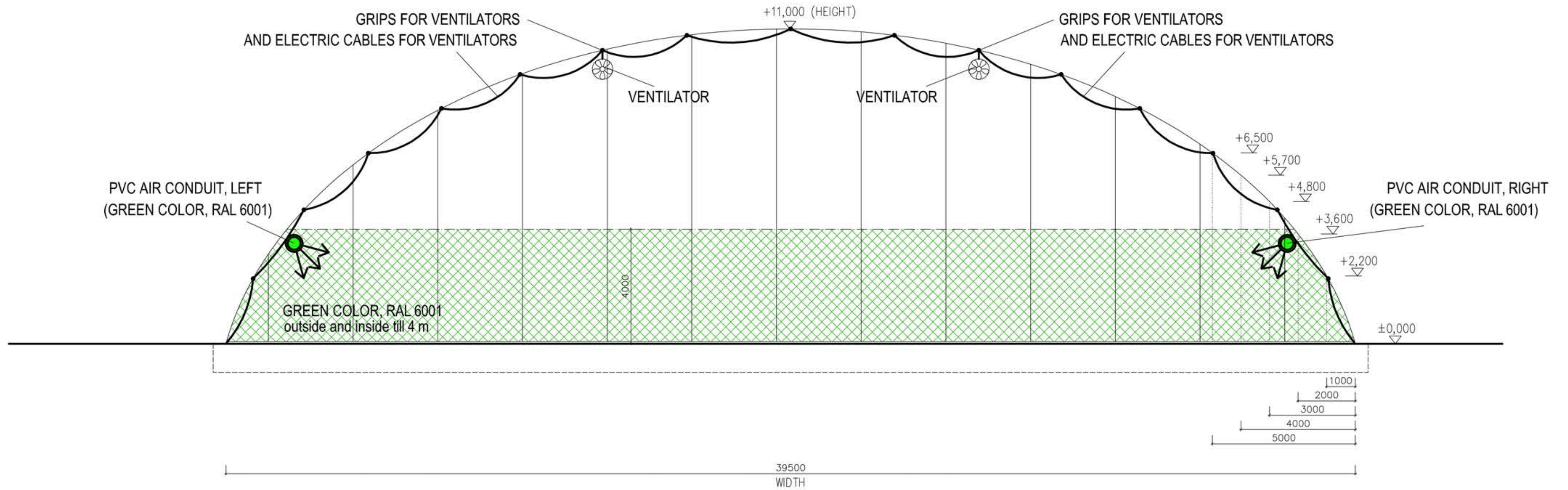
- double membrane



POSITION OF GRIPS FOR VENTILATORS AND CABLES

# AIR DOME 65,80 x 39,50 x 11,00

## - double membrane

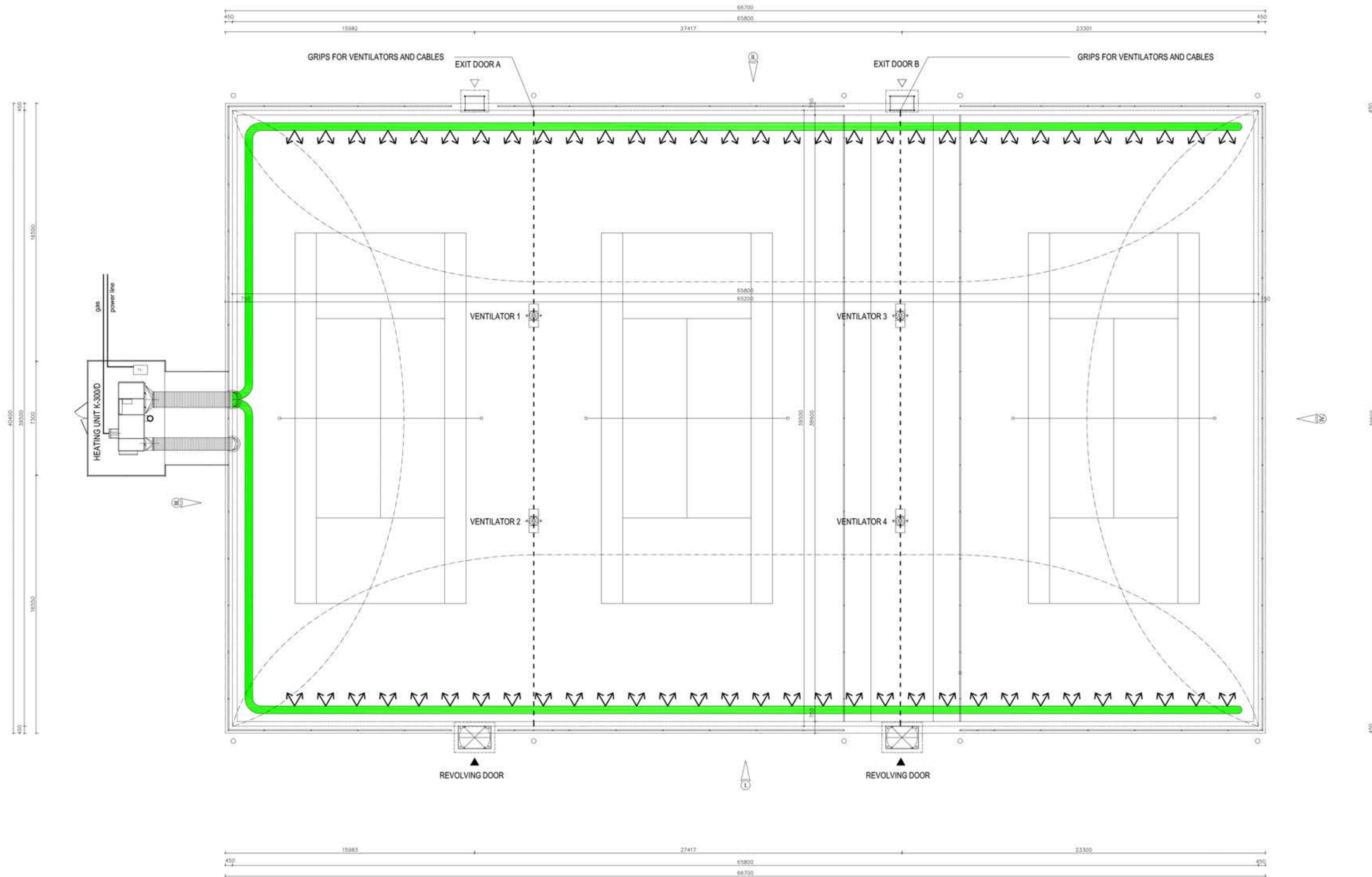


AIR CONDUIT INSIDE THE AIR DOME  
ON THE INSIDE MEMBRANE



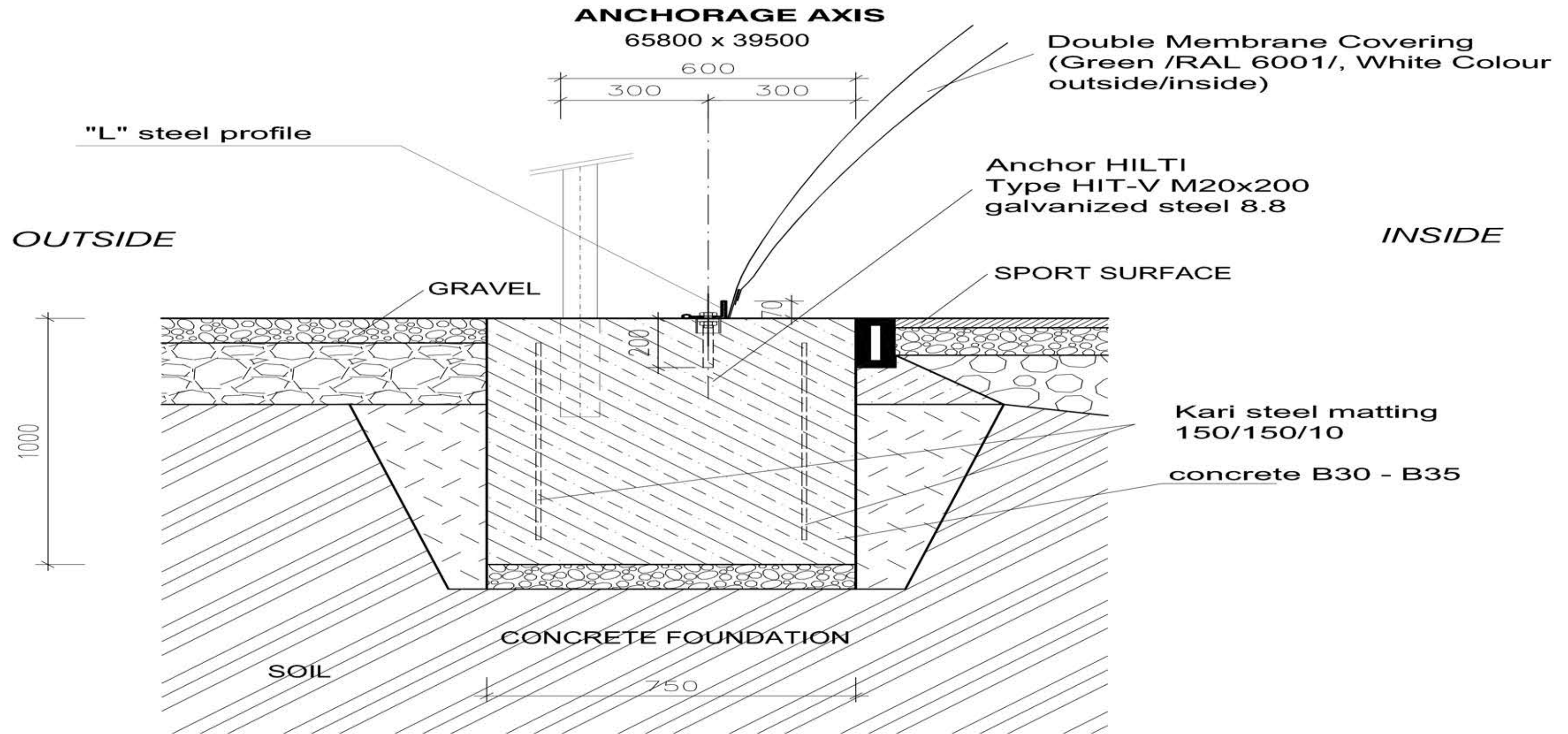
# AIR DOME 65,80 x 39,50 x 11,00

- double membrane



DIRECTION OF AIR CONDUIT MADE OF PVC  
INSIDE THE AIR DOME IN GREEN COLOR  
RAL 6001

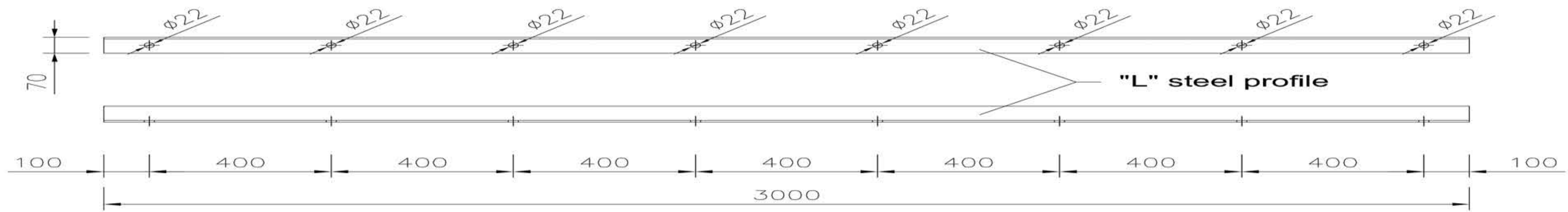
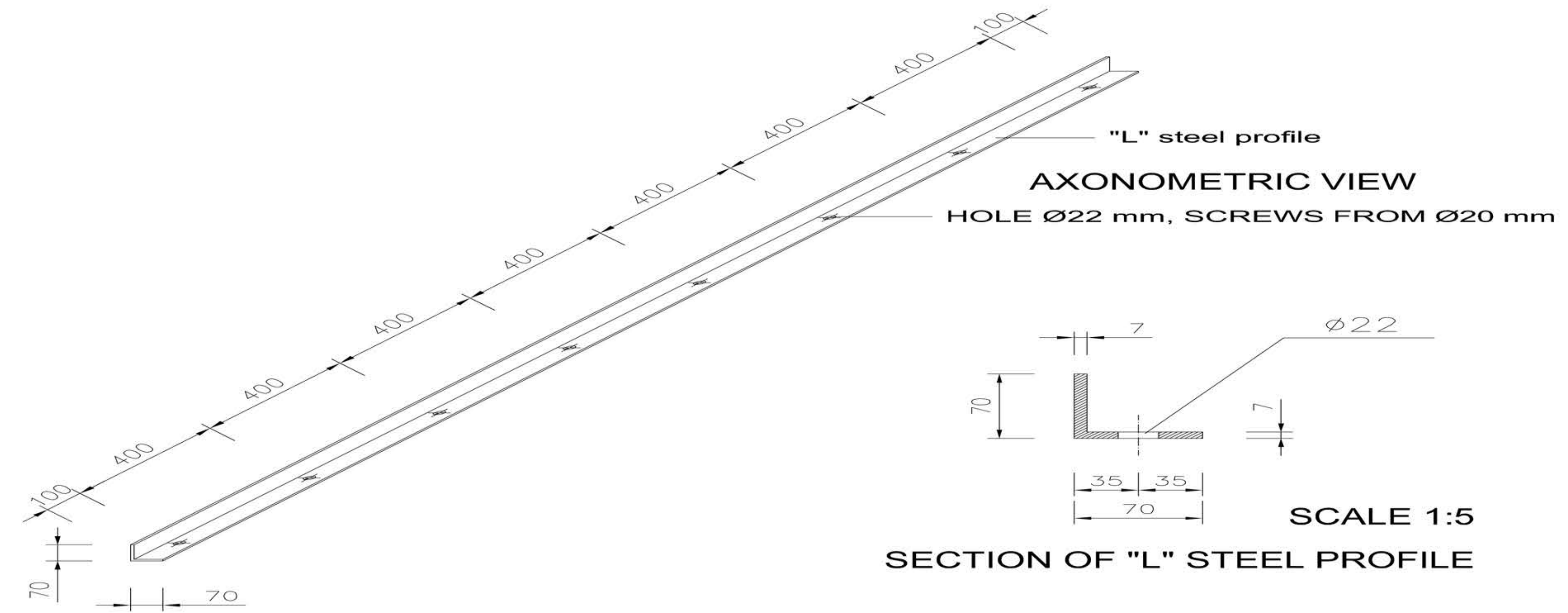
# AIR DOME 65,80 x 39,50 x 11,00 - double membrane



DETAIL OF CHEMICAL ANCHOR FIXED IN CONCRETE FOUNDATION  
SCALE 1:20

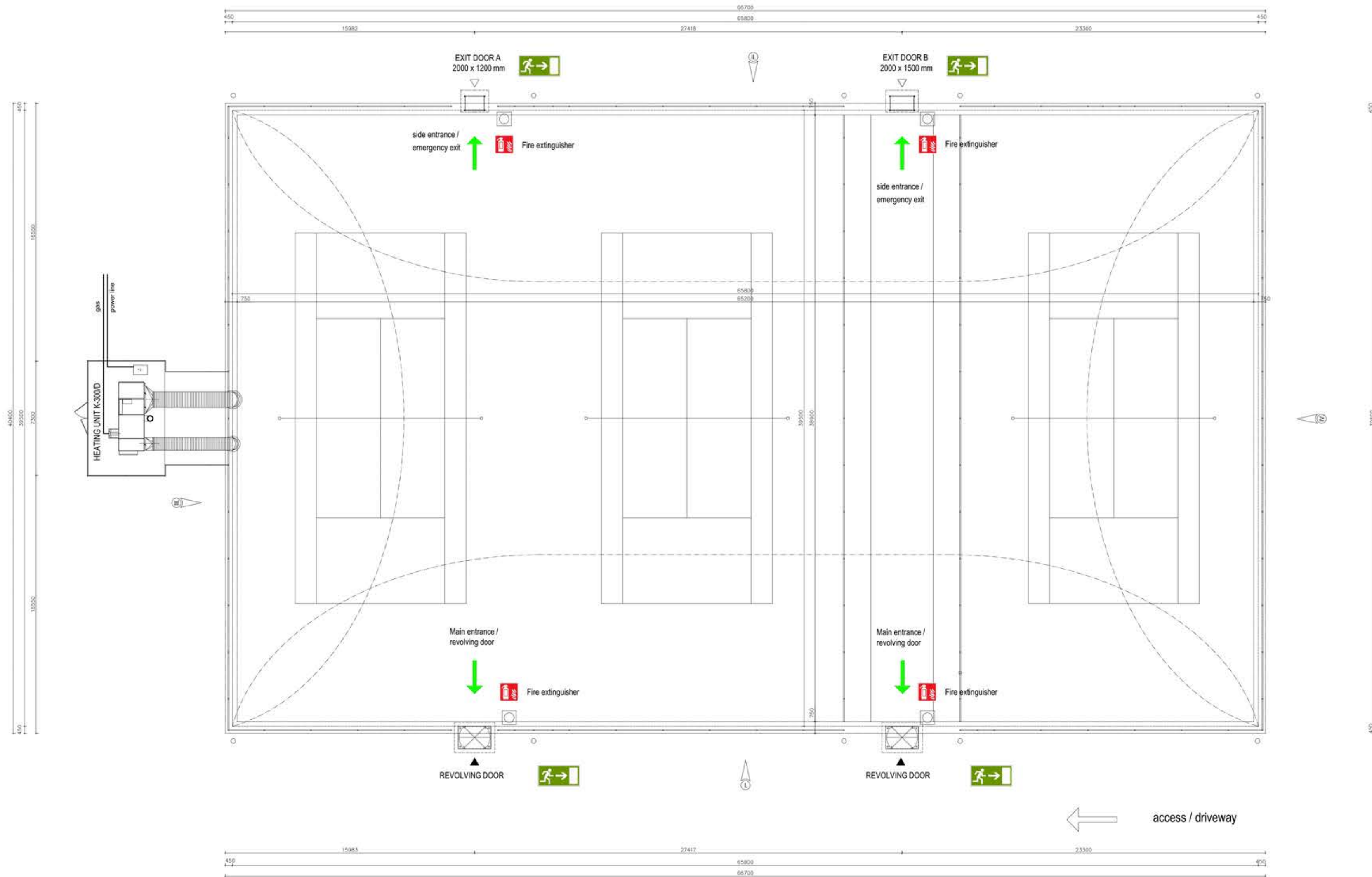


# AIR DOME 65,80 x 39,50 x 11,00 - double membrane



# AIR DOME 65,80 x 39,50 x 11,00

- double membrane



FIRE PROTECTION CONCEPT